

## ELECTRONIC GATE LOCK

Designed to secure vehicle and pedestrian gates, the YG10 boast a large range of features. Extremely high physical strength is critical but it's the ease of control and connectivity to access control systems that really make the YG10 stand out against its competition. A fully monitored, weather resistant product, the YG10 is the perfect outdoor locking solution.

### Extreme Security

- Automatic deadbolting, 18mm diameter stainless steel bolt pin.
- 30,000N holding force (3,000Kg).
- Keyed access to manual override.

### Weather Proof

- Suitable for outdoor use with an IP55 rating.
- Powdered coated aluminium body and cover.

### Varied Voltage Input

- Input voltage from 12VDC – 24VDC.

### Complete Monitoring

- Door position switch.
- Bolt locked monitor.
- Bolt unlocked monitor.

### Low Current Consumption

- Less than 15mA in standby.
- Less than 300mA in operation.

### Integrated Access Control

- Selectable timed re-lock after 1 minute.
- Multiple attempts to lock and unlock.
- User selectable fail safe / fail secure operation.
- Anti-tamper and selectable instant auto-relock when desired.

### Versatile Installation

- Internal horizontal or vertical installation.

### Security System Compatible

- Integrate with access control and alarm systems.

### Dimensions

- 163mmL x 89mmW x 77mmD.



## PRODUCT SPECIFICATIONS

With a holding force of over 30,000N the YG10 offers the ultimate security for large doors and gates. The mounting bolts for the lock are concealed under the lock's cover which can only be removed by using the supplied key. With its symmetrical design the YG10 can be mounted horizontally or vertically on the left or right hand side of a door.

### YG10 SPECIFICATIONS

**Lock – Field convertible (YNL800A)**

164L x 88W x 78D(mm)

**L Strike (YNL803)**

75L x 75W x 70D(mm)

**Holding Force**

30,000N (3000Kg)

**Bolt Pin**

Stainless Steel,  $\varnothing$ 18mm, 35mm stroke

**Feedback**

Audible beeper for locked / unlocked and failed alarm

**Voltage at Lock**

12 – 24VDC +/-10%

**Current Usage**

Holding: <15mA@12V, <15mA@24V  
 Operating: <300mA@12V, <200mA@24V  
 Stall: <2A@12V, <1A@24V

**Monitors Switches**

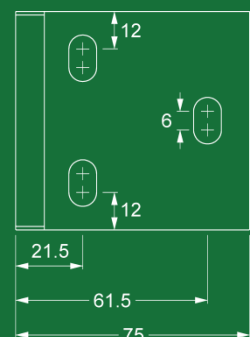
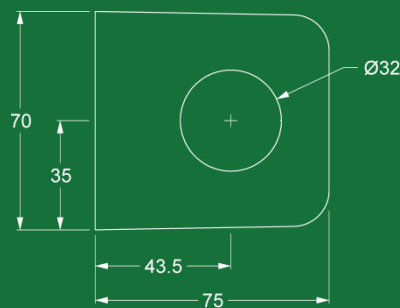
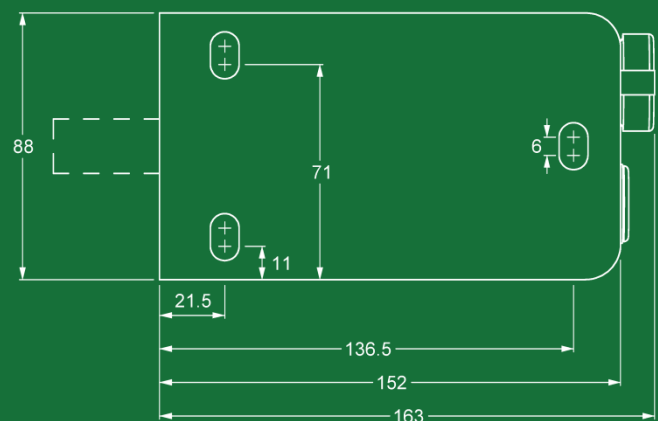
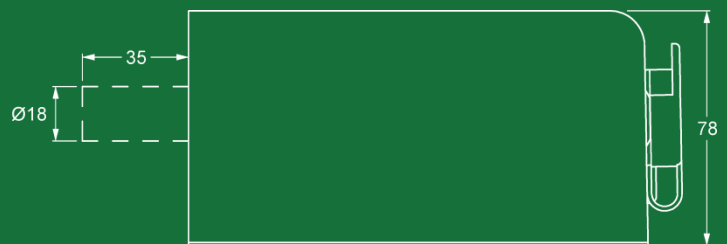
Bolt position: 60VDC, 0.2A  
 Door Position: 100VDC, 0.5A

**Materials**

Aluminium: A380, Stainless Steel: 304

**Approvals**

IP55  
 Cycle tested to 1000000 operations



**LOCKING DIVISION:**  
 BQT Solutions (SEA) Pte Ltd  
 Mediapolis  
 71 Ayer Rajah Crescent #03-03  
 Singapore 139951  
 Phone: +65 62207970

BQT Solutions (NZ) Ltd  
 Unit E, 8 Piermark Drive  
 Albany, Auckland 0632  
 New Zealand  
 Phone: +64 94473145

**ENQUIRIES:**  
 Australia & Pacific: E: sales@bqtsolutions.com P: +61 2 8817 2800  
 New Zealand: E: salesnz@bqtsolutions.com P: +64 9447 3145  
 EMEA Region: E: salesuk@bqtsolutions.com P: +44 17 3773 5071  
 Americas: E: salesamerica@bqtsolutions.com P: +1 443 286 1020  
 Greater Asia: E: salesasia@bqtsolutions.com P: +65 6220 7970

**DEALER DETAILS:**