

MAGNETICALLY LATCHING DEADBOLT

The YD38L brings together two critical features; the highest holding force of any of the door lock range of products and the innovative latching device designed to align the door. First the magnetic latch ensures the correct positioning of the lock and strike before the YD38L activates and secures the door with its deadbolting pin. YD38L; convenience and security.

Dual Action

- Magnetic Latch to capture the door.
- Deadbolt to secure the door.

High Security

- Automatic deadbolting.
- 20,000N holding force (2,000kg).
- 14.2mm diameter stainless steel bolt pin.

Physical Dimensions

- 203mmL x 37.5mmW x 44mmD.

Dual Monitoring

- Door and bolt position monitors.

Integrated Access Control

- Anti-tailgate and Anti-tamper.
- Auto-relock after 0/3/6/9 seconds.
- Multiple attempts to lock and unlock.

Low Current Consumption

- Current reduction circuitry limits the power required to maintain the locks state.

Electronic Convenience

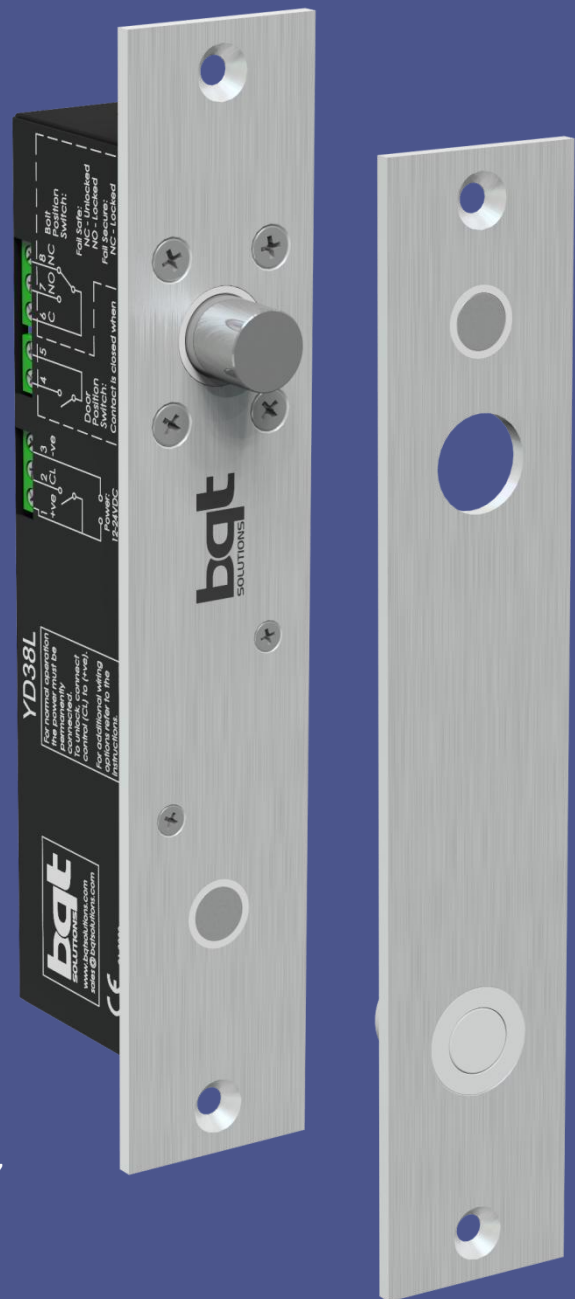
- Input voltage from 12VDC – 24 VDC.
- Thermal overheating protection.
- Reverse polarity and transient protection.

Versatile Installation

- Mortice mount horizontally or vertically, on single or double acting doors.
- Surface mount with the aid of the YD38L accessories, including mounting onto glass.

Approvals

- CE-BS EN50081-1, BS EN50082-1, BS EN50082-2.
- Cycle tested to 1000000 operations.



ACCESSORIES & SPECIFICATIONS

Surface mounting a lock and/or strike with the aid of the YD38L accessories offers more flexibility in installation and makes securing glass doors possible. Dress plates are offered to give a 'clean' finish when a housing has been installed onto glass. The housing and dress plate are supplied with self-adhesive tape for instant application to glass doors and frames.

YD38L SPECIFICATIONS

Fail Safe Lock (YNL181G)

203L x 37.5W x 44D(mm)

Fail Secure Lock (YNL182G)

203L x 37.5W x 44D(mm)

Long Strike (YNL183G)

203L x 37.5W x 19D(mm)

Housing (YNL174J)

206L x 41W x 49D(mm)

Dress Plate (YNL176J)

210L x 0.7W x 50D(mm)

Holding Force

20,000N (2000Kg)

Voltage at Lock

12 – 24VDC +/-10%

Current Usage

Holding: 230mA@12V, 90mA@24V

Operating: 1.5A@12V, 1.4A@24V

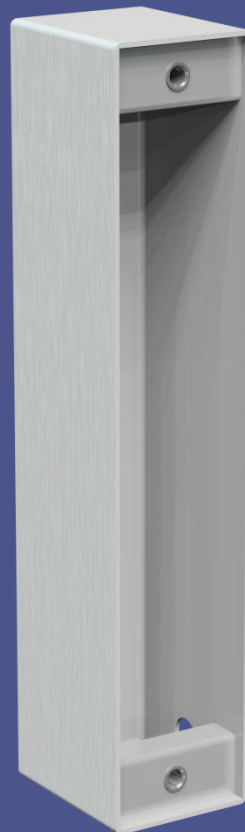
Monitors Switches

Bolt position: 25VDC, 0.5A

Door Position: 100VDC, 0.5A

Materials

Plastics: POM, Stainless Steel: 304



HOUSING
(YNL174J)



DRESS PLATE
(YNL176J)

LOCKING DIVISION:

 BQT Solutions (SEA) Pte Ltd
 Mediapolis
 71 Ayer Rajah Crescent #03-03
 Singapore 139951
 Phone: +65 62207970

 BQT Solutions (NZ) Ltd
 Unit E, 8 Piermark Drive
 Albany, Auckland 0632
 New Zealand
 Phone: +64 94473145

ENQUIRIES:

Australia & Pacific:	E: sales@bqtsolutions.com	P: +61 2 8817 2800
New Zealand:	E: salesnz@bqtsolutions.com	P: +64 9447 3145
EMEA Region:	E: salesuk@bqtsolutions.com	P: +44 17 3773 5071
Americas:	E: salesamerica@bqtsolutions.com	P: +1 443 286 1020
Greater Asia:	E: salesasia@bqtsolutions.com	P: +65 6220 7970

DEALER DETAILS: