

## ELECTRONIC DEADBOLTING LOCK

The YD38 offers the highest level of security of any of the BQT Solutions door products. Incorporating the same advanced design, quality and electronic ingenuity as the YD25 but with increased strength primarily achieved by utilizing a larger diameter bolt pin, the YD38 is the preferred option when high physical strength is needed.

### High Security

- Automatic deadbolting.
- 20,000N holding force (2,000kg).
- 14.2mm diameter stainless steel bolt pin.

### Physical Dimensions

- 203mmL x 37.5mmW x 44mmD.

### Integrated Access Control

- Anti-tailgate and Anti-tamper.
- Auto-relock after 0/3/6/9 seconds.
- Multiple attempts to lock and unlock.

### Dual Monitoring

- Door and bolt position monitors.

### Low Current Consumption

- Current reduction circuitry limits the power required to maintain the locks state.

### Electronic Convenience

- Input voltage from 12VDC – 24 VDC.
- Thermal overheating protection.
- Reverse polarity and transient protection.

### Versatile Installation

- Mortice mount horizontally or vertically, on single or double acting doors.
- Surface mount with the aid of the YD38 accessories, including mounting onto glass.

### Approvals

- CE-BS EN50081-1, BS EN50082-1, BS EN50082-2.
- Cycle tested to 1000000 operations.



## ACCESSORIES & SPECIFICATIONS

Surface mounting a lock and/or strike with the aid of a YD38 housing offers more flexibility in installation and makes securing glass doors possible. Dress plates are offered to give a 'clean' finish when a housing has been installed onto glass. Both the housing and dress plate are supplied with self-adhesive tape for instant application to glass doors and frames.

### YD38 SPECIFICATIONS

**Fail Safe Lock (YNL171C)**

203L x 37.5W x 44D(mm)

**Fail Secure Lock (YNL172C)**

203L x 37.5W x 44D(mm)

**Short Strike (YNL173C)**

90L x 30W x 3D(mm)

**Long Strike (YNL173G)**

203L x 37.5W x 3D(mm)

**Housing (YNL174J)**

206L x 41W x 49D(mm)

**Dress Plate (YNL176J)**

210L x 0.7W x 50D(mm)

**Holding Force**

20,000N (2000Kg)

**Voltage at Lock**

12 – 24VDC +/-10%

**Current Usage**

Holding: 230mA@12V, 90mA@24V

Operating: 1.5A@12V, 1.4A@24V

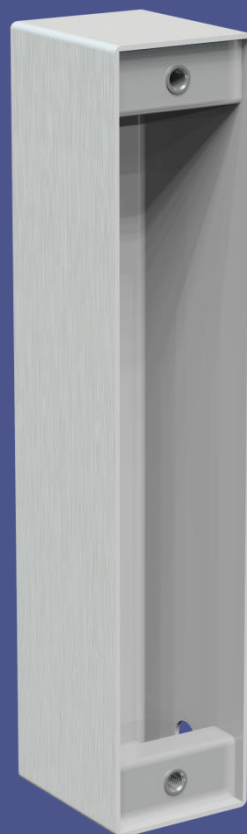
**Monitors Switches**

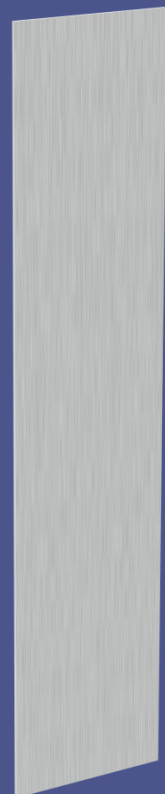
Bolt position: 25VDC, 0.5A

Door Position: 100VDC, 0.5A

**Materials**

Plastics: POM, Stainless Steel: 304


 HOUSING  
(YNL174J)

 LONG STRIKE  
(YNL173G)

 DRESS PLATE  
(YNL176J)

**LOCKING DIVISION:**

 BQT Solutions (SEA) Pte Ltd  
Mediapolis  
71 Ayer Rajah Crescent #03-03  
Singapore 139951  
Phone: +65 62207970

 BQT Solutions (NZ) Ltd  
Unit E, 8 Piermark Drive  
Albany, Auckland 0632  
New Zealand  
Phone: +64 94473145

**ENQUIRIES:**

 Australia & Pacific: E: sales@bqtsolutions.com P: +61 2 8817 2800  
New Zealand: E: salesnz@bqtsolutions.com P: +64 9447 3145  
EMEA Region: E: salesuk@bqtsolutions.com P: +44 17 3773 5071  
Americas: E: salesamerica@bqtsolutions.com P: +1 443 286 1020  
Greater Asia: E: salesasia@bqtsolutions.com P: +65 6220 7970

**DEALER DETAILS:**