

ELECTRONIC SIDE LOAD LOCK

The YD30, COBALT, is a motor driven electronic lock designed to secure commercial and residential double acting doors. The lock addresses the two biggest issues in door locking; the ability to align a misaligned door and the ability to release when requested, even with excessive load on the door. Reliable, secure, convenient; the COBALT has arrived.

Door Alignment

- Door misalignment of up to +/- 8mm is corrected.

Side Load Release

- The door can have in excess of 100kg being applied and it will still release instantly when requested.

High Security

- Automatic deadbolting.
- 10,000N holding force (1,000kg).
- Two, 10mm thick stainless steel bolt pins.

Electronic Convenience

- Input voltage from 12VDC – 24 VDC.
- Less than 50mA standby current.
- Reverse polarity and transient protection.
- Multiple attempts to lock.

Simple Configuration

- Convert from Fail Safe to Fail Secure by repositioning a single jumper.

Dual Monitoring

- Door and bolt position monitors.

Versatile Installation

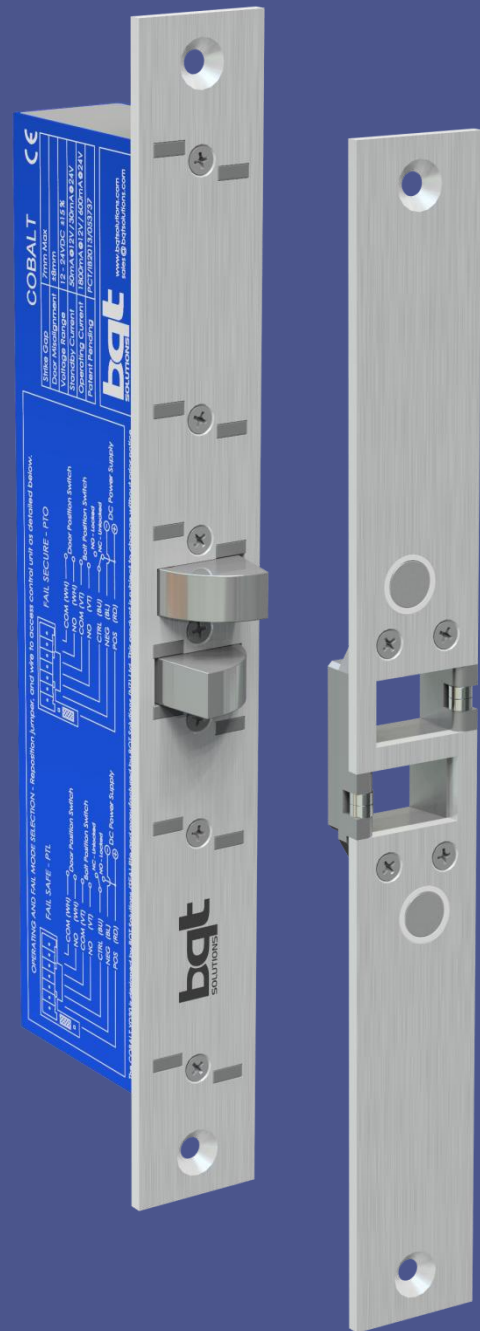
- Mortice mount horizontally or vertically, on double acting doors.
- Surface mount with the aid of the YD30 accessories, including mounting onto glass.

Physical dimensions

- 255mmL x 30mmW x 51mmD.

Certifications

- EN61000-6-1: 2007.
- EN61000-6-3: 2007 + Amendment 1: 2001.
- FCC Part 15, subparts A and B.
- Patent Pending: PCT/IB2013/053737.



ACCESSORIES & SPECIFICATIONS

Surface mounting a lock and/or strike with the aid of the YD30 accessories offers more flexibility in installation and makes securing glass doors possible. Dress plates are offered to give a 'clean' finish when a housing has been installed onto glass. The housing and dress plate are supplied with self-adhesive tape for instant application to glass doors and frames.

YD30 SPECIFICATIONS

Lock – Field convertible (YNL200H)

255L x 30W x 51D(mm)

Long Strike (YNL203H)

255L x 30W x 14D(mm)

Housing (YNL204J)

258L x 34W x 55D(mm)

Dress Plate (YNL206J)

260L x 0.7W x 58D(mm)

Holding Force

10,000N (1000Kg)

Door Misalignment

+/- 8mm

Side Load Release

Up to 100Kg opening load on door

Voltage at Lock

12 – 24VDC +/-15%

Current Usage

Holding: <50mA@12V, <30mA@24V

Operating: <250mA@12V, <200mA@24V

Initial power up: <1.8A@12V, <0.6A@24V

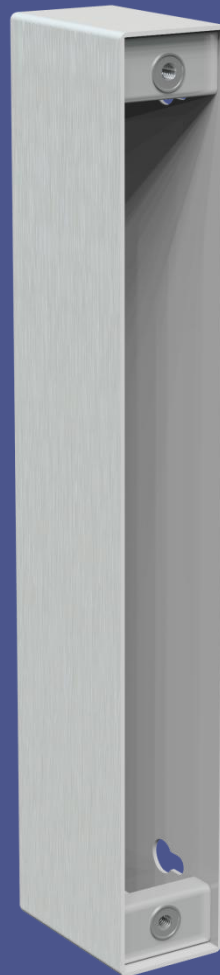
Monitors Switches

Bolt position: 30VDC, 0.1A

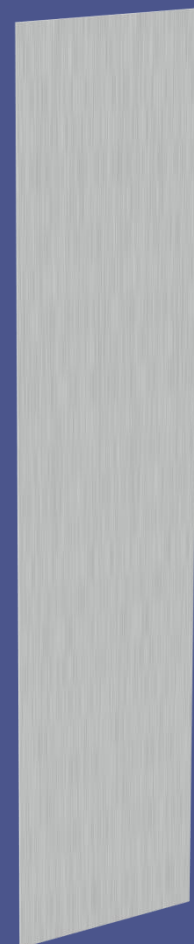
Door Position: 100VDC, 0.5A

Endurance

>300,000 cycles @ 0 to 50°C



HOUSING
(YNL204J)



DRESS PLATE
(YNL206J)

LOCKING DIVISION:

BQT Solutions (SEA) Pte Ltd
Mediapolis
71 Ayer Rajah Crescent #03-03
Singapore 139951
Phone: +65 62207970

BQT Solutions (NZ) Ltd
Unit E, 8 Piermark Drive
Albany, Auckland 0632
New Zealand
Phone: +64 94473145

ENQUIRIES:

Australia & Pacific:	E: sales@bqtsolutions.com	P: +61 2 8817 2800
New Zealand:	E: salesnz@bqtsolutions.com	P: +64 9447 3145
EMEA Region:	E: salesuk@bqtsolutions.com	P: +44 17 3773 5071
Americas:	E: salesamerica@bqtsolutions.com	P: +1 443 286 1020
Greater Asia:	E: salesasia@bqtsolutions.com	P: +65 6220 7970

DEALER DETAILS: