

## MAGNETICALLY LATCHING DEADBOLT

The YD25L incorporates a unique latching device that is a world first in electronic deadbolts. Door alignment problems vanish with the innovative design which ensures the correct positioning of the lock and strike every time. Incorporating access control functions, and the highest quality componentry, never before has an electronic deadbolt offered so much.

### Dual Action

- Magnetic Latch to capture the door.
- Deadbolt to secure the door.

### Streamline Dimensions

- 210mmL x 25mmW x 42mmD.

### High Security

- Automatic deadbolting.
- 10,000N holding force (1,000kg).
- 12.7mm diameter stainless steel bolt pin.

### Integrated Access Control

- Anti-tailgate and Anti-tamper.
- Auto-relock after 0/3/6/9 seconds.
- Multiple attempts to lock and unlock.

### Dual Monitoring

- Door and bolt position monitors.

### Low Current Consumption

- Current reduction circuitry limits the power required to maintain the locks state.

### Electronic Convenience

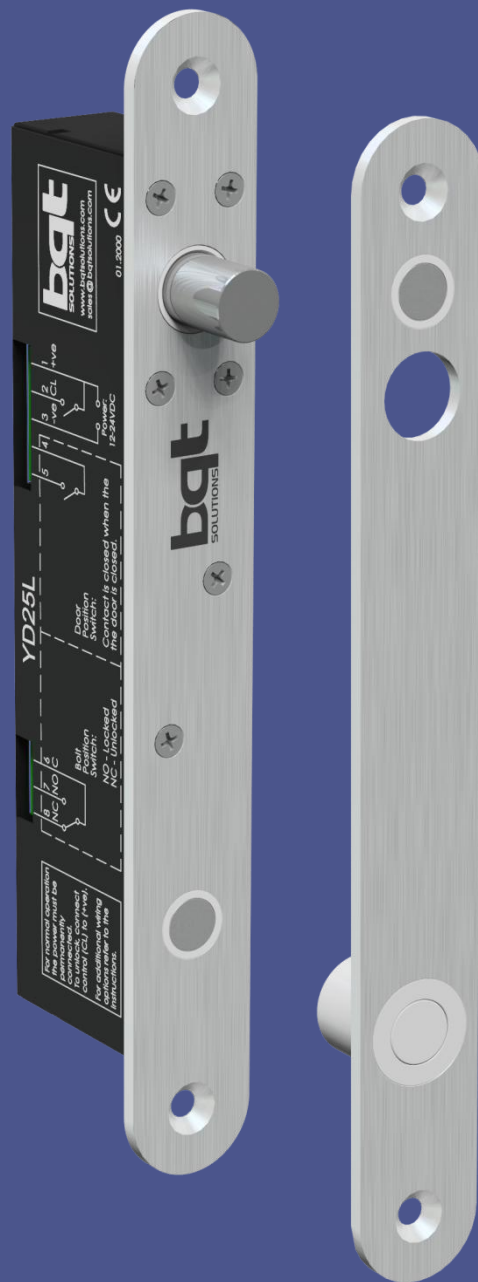
- Input voltage from 12VDC – 24 VDC.
- Thermal overheating protection.
- Reverse polarity and transient protection.

### Versatile Installation

- Mortice mount horizontally or vertically, on single or double acting doors.
- Surface mount with the aid of the YD25L accessories, including mounting onto glass.

### Approvals

- CE-BS EN50081-1, BS EN50082-1, BS EN50082-2.
- Cycle tested to 1000000 operations.



## ACCESSORIES & SPECIFICATIONS

Surface mounting a lock and/or strike with the aid of the YD25L accessories offers more flexibility in installation and makes securing glass doors possible. Dress plates are offered to give a 'clean' finish when a housing has been installed onto glass. The housing and dress plate are supplied with self-adhesive tape for instant application to glass doors and frames.

### YD25L SPECIFICATIONS

**Fail Safe Lock (YNL131E)**

210L x 25W x 42D(mm)

**Fail Secure Lock (YNL132E)**

210L x 25W x 42D(mm)

**Long Strike (YNL133E)**

210L x 25W x 19D(mm)

**Housing (YNL104J)**

225L x 29W x 46.5D(mm)

**Dress Plate (YNL106J)**

225L x 0.7W x 50D(mm)

**Holding Force**

10,000N (1000Kg)

**Voltage at Lock**

12 – 24VDC +/-10%

**Current Usage**

Holding: 160mA@12V, 95mA@24V

Operating: 1.25A@12V, 1A@24V

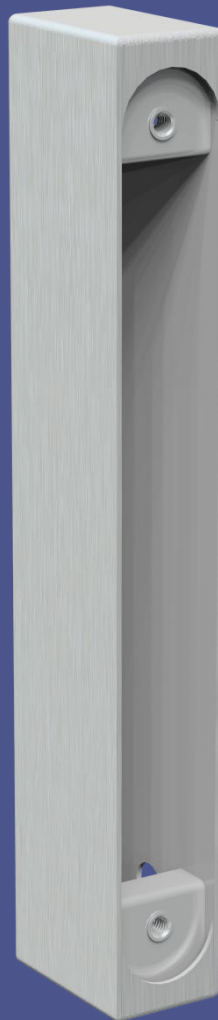
**Monitors Switches**

Bolt position: 25VDC, 0.5A

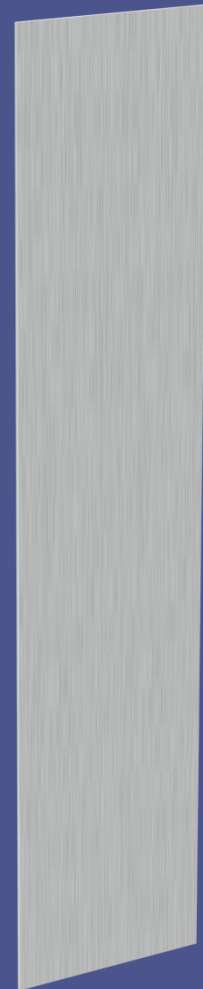
Door Position: 100VDC, 0.5A

**Materials**

Plastics: POM, Stainless Steel: 304



HOUSING  
(YNL104J)



DRESS PLATE  
(YNL106J)

**LOCKING DIVISION:**

 BQT Solutions (SEA) Pte Ltd  
 Mediapolis  
 71 Ayer Rajah Crescent #03-03  
 Singapore 139951  
 Phone: +65 62207970

 BQT Solutions (NZ) Ltd  
 Unit E, 8 Piermark Drive  
 Albany, Auckland 0632  
 New Zealand  
 Phone: +64 94473145

**ENQUIRIES:**

Australia & Pacific:	E: sales@bqtsolutions.com	P: +61 2 8817 2800
New Zealand:	E: salesnz@bqtsolutions.com	P: +64 9447 3145
EMEA Region:	E: salesuk@bqtsolutions.com	P: +44 17 3773 5071
Americas:	E: salesamerica@bqtsolutions.com	P: +1 443 286 1020
Greater Asia:	E: salesasia@bqtsolutions.com	P: +65 6220 7970

**DEALER DETAILS:**